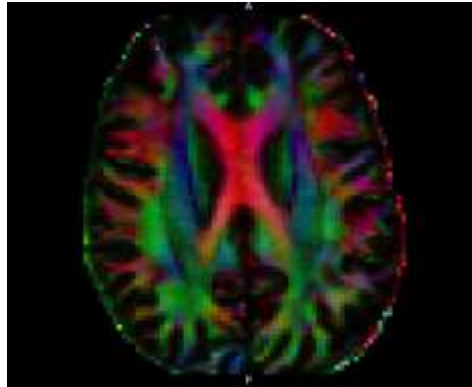


Are You Interested in Participating in a Brain Imaging Research Study?

We are recruiting **healthy volunteers** and patients with Parkinson's disease to participate in an MRI study of Parkinson's disease. **The aim is to develop new imaging tools to help study Parkinson's disease and develop new treatments.**



You may be eligible to participate if you:

Are a healthy adult over the age of 30.

Do not have any contraindication for MRI (metal fragments in your body, pacemaker, etc.), and are not pregnant or claustrophobic.

You will be compensated \$30 for your time and transportation expenses upon completion of the 1 hour MRI study and 1 hour neurological evaluation.

If interested, please contact **Becky McMurray at 404-712-7013 or email:**

rmmurr@emory.edu . Please include "MRI Research" in the subject and a contact phone number in the email.

Brain MRI Study in Parkinson's disease
Becky McMurray 404-712-7013

Brain MRI Study in Parkinson's disease
Becky McMurray 404-712-7013

Brain MRI Study in Parkinson's disease
Becky McMurray 404-712-7013

Brain MRI Study in Parkinson's disease
Becky McMurray 404-712-7013

Brain MRI Study in Parkinson's disease
Becky McMurray 404-712-7013

Brain MRI Study in Parkinson's disease
Becky McMurray 404-712-7013

Brain MRI Study in Parkinson's disease
Becky McMurray 404-712-7013

Brain MRI Study in Parkinson's disease
Becky McMurray 404-712-7013

Brain MRI Study in Parkinson's disease
Becky McMurray 404-712-7013